



Underfloor Heating (UK)

Industrial - Commercial - Domestic

Devireg 540/550

Thermostat controller working with both
room and floor temperatures

Product Manual

www.underfloorheating-uk.co.uk

User Guide

Norris House
Elton Park Business Centre
Hadleigh Road Ipswich
Suffolk IP2 0HU
United Kingdom

(t) 01473 280 444

(f) 01473 231 850

Table of contents

Introduction	3
Introducing devireg [™] 540/550	4
How to use your deviheat [™] heating system	6
Daily operation	7
Setting the clock & day	10
Timer programming	11
Warranty	16

Do not cover the thermostat, e.g. by hanging towels etc. directly in front of it !

Introduction

You have purchased a **devireg**[™] 540/550 thermostat, which forms an integrated part of a **deviheat**[™] system.

DEVI[™] has developed the **devireg**[™] 540/550 to make your floor heating an even more environmentally correct way of heating your home.

devireg[™] 540/550 will work dynamically with both the room and floor temperature in order to give you the highest possible comfort in the most economical way.

devireg[™] ***550 ONLY:***

Furthermore, **devireg**[™] 550 will take a few days to optimise the use of the heating system, but it does not stop there. The **devireg**[™] 550 will continue to learn from the room and thus constantly improve its performance and consequently your comfort and economy.

We wish you many years of comfort with your new **deviheat**[™] system.

Introducing **devireg**™ 540/550

devireg™ 540 is an advanced temperature controller, with a built-in Timer.

devireg™ 550 ONLY:

devireg™ 550 is an adaptive temperature controller, specially designed for floor heating systems.

The **devireg**™ 550 will measure the radiant comfort from the floor combined with the comfort from the air temperature in the room to offset the outside weather condition.

We as human beings perceive comfort as the combined effect of the radiant heat from the floor and air temperature in the room. By continually measuring this combined effect, it is therefore possible to maintain the highest possible comfort level.

A higher floor radiant temperature can produce a sense of comfort with a lower air temperature which can result in lower running costs without reducing comfort levels.

All this means that as soon as you have set your **devireg™** 550 at your desired comfort temperature, you do not have to do anything else. **devireg™** 550 will automatically adjust the heating to meet your requirements for comfort and economy, no matter how the weather is changing outside. This also means that **devireg™** 550 is capable of detecting a sudden temperature drop in the room. Instead of switching the heating on to immediately compensate, the **devireg™** 550 uses the information stored then checks to see if this is caused by e.g. the effects of a window opened for 10 minutes !

Even the programming of economy temperatures (i.e. during the night) is very simple. You do not have to calculate how much earlier the heating should start in order to reach a specific temperature at a specific time. Just tell the **devireg™** 550 when you want the comfort temperature and the **devireg™** 550 will take care of the rest. By learning the rate of heat loss from the room, the **devireg™** 550 knows when to start heating in order to achieve the selected temperature at exactly the right time.

How to use your deviheat™ heating system

The function of the button

The button can be turned both ways, is indicated by



or the button can be pressed/held, is indicated by



View of symbols in the display

Symbol for Timer On

Symbol for frost protection

Numerical display for time, temperature, text, etc.

Weekdays

Flashing point for actual time

Symbol for setting of clock

Symbol for temperature below set-point

Symbol for degrees

Indication of AM/PM time at 12 hour clock

24 hour clock-ring which shows actual time and timer programme

Symbol for Timer programming



Daily operation

devireg™ 540/550 has two temperature settings:

Constant temperature with the timer off.
Can be used e.g. as 'Party Mode' or for constantly lowering the temperature when going on holiday. This is indicated by a continuous clock ring ...



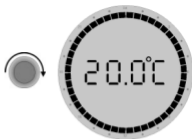
Timer setting with automatic switching between economy and comfort temperature.
Clock and timer must be set !
Is indicated by the timer symbol and the clock ring showing the timer programme ...



(Display will indicate same temperature during both comfort and economy periods. But temperature will, during economy periods, be lowered according to the set-back level.)

You want to raise the temperature ...

Turn clockwise to raise the temperature.



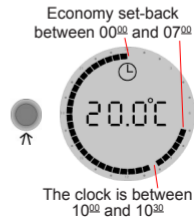
You want to lower the temperature ...

Turn counter-clockwise to lower the temperature.



You want to switch on or off the timer function ...

Press the button to switch on the timer. Press again to switch off the timer.

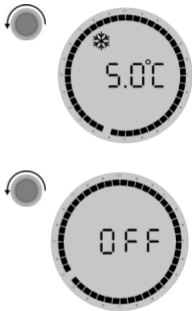


The marking on the clock-ring indicates when comfort temperature is chosen and when economy set-back is switched on. A flashing point indicates the actual clock (every half hour).

If the temperature is lowered to minimum (+5°C), a frost symbol will appear in the display, indicating that the thermostat will maintain minimum +5°C in the room for frost protection.

If the temperature is turned below +5°C, the thermostat will switch off. (Only possible with the timer off)
When the temperature is raised again the thermostat will automatically switch on.

If the **devireg**TM 540/550 only uses a floor sensor, the display will not show the actual temperature (5° to 35°), but a scale from 0 to 10.



Setting the clock & day

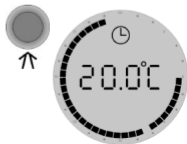
You want to set/change the clock ...
(The clock is not set from the factory)

Hold the button for 3 sec.

The clock can now be set forward or back by turning the button to the right or left respectively.

Changing the week day is done by continuing to change the time until it passes 0:00, either way. The numbers 1-7 do not correspond to any specific days, so you can choose which day of the week is No. 1 etc.

When the clock is set correctly, press the button to save the settings.



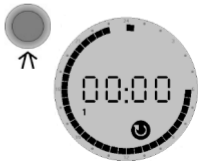
Timer programming

You want to set/change the economy set-back programme ...
(The timer is not set from the factory)

Hold the button for 6 sec. The programme for economy set-back can now be edited.

First, turn the button to choose the weekday which you want to programme ...

Press the button to start the programming ...



The button is alternately turned and pressed to choose periods with economy set-back and periods with comfort temperature respectively.

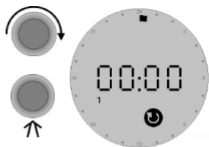
The programming switches between low (economy set-back) and high (comfort) temperature every time you press the button.

And between every time you press, you can turn the button and choose the period of time.

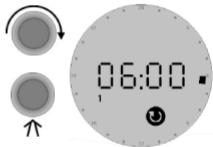


Example

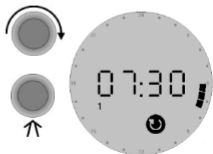
When you enter the programming menu choose a day and press the button ...



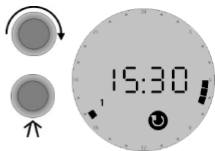
Turn until you reach the first time when you want comfort temperature, e.g. 06:00. Press ...



Turn until the temperature must be lowered again, e.g. 07:30. Press ...



And turn to the next comfort period, e.g. 15:30, and press ...



Then, turn until you reach the time when the next lowering of the temperature must start, e.g. 22:30, and press ...



If you continue to turn, the programme will automatically continue with the next day.



This way, the programming can continue for the entire week.

End

When you have ended the programming, the changes must be saved.



3 sec.



This is done by holding the button for 3 sec. The display will automatically return to normal display.

Remember (*devireg™ 550 ONLY*):

With devireg™ 550 you only have to programme the time when you want comfort temperature and the time you want economy temperature. The thermostat will do the rest. You do not have to calculate when the heating should start; devireg™ 550 will do this for you.

The DEVI™ Warranty:

You have purchased a **deviheat™** 550 thermostat, which forms an integrated part of a **deviheat™** system, which we are certain will improve your home comfort and economy.

deviheat™ provides complete heating solutions with **deviflex™** heating cables or **devimat™** heating mats, **devireg™** thermostats and **devifast™** fitting bands.

If, however, contrary to all expectations, a problem should occur with your heating system, we at **DEVI™**, with manufacturing units in Denmark, are, as European Union suppliers, subject to general product liability rules, as stated in Directive 85/374/CEE, and all relevant national laws which implies that:

DEVI™ provides a warranty for **deviflex™** heating cables and **devimat™** heating mats for a 10 year period and all other **DEVI™** products for a 2 year period against defects in material and production. The guarantee is granted on the condition that the WARRANTY CERTIFICATE on the overleaf is filled out properly in accordance to instructions and that the defect is inspected by, or presented to, **DEVI™** or authorised **DEVI™** distributor.

Please note that the wording of the WARRANTY CERTIFICATE must be provided in English or local language with the ISO code for your country in the upper left

corner of the front page of the installation instructions in order to release the warranty.

The obligation of **DEVI™** will be to repair or supply a new unit, free of charge to the customer, without secondary charges linked to repairing the unit.

In case of defective **devireg™** thermostats, **DEVI™** reserves the right to repair the unit free of charge and without unreasonable delay to the customer.

The DEVI™ warranty does not cover installations made by unauthorised electricians, or faults caused by incorrect designs supplied by others, misuse, damage caused by others, or incorrect installation or any subsequent damage that may occur. If **DEVI™** is required to inspect or repair any defects caused by any of the above, then all work will be fully chargeable.

The DEVI™ warranty is void, if payment of the equipment is in default. At all times, we at **DEVI™** will respond honestly, efficiently and promptly to all queries and reasonable requests from our customers.

The above mentioned warranty concerns product liability whereas matters in relation to legislation on sale of goods shall be referred to national law.

Warranty Certificate

The DEVI™ Warranty is granted to:

Name:

Address:

Postal code:

Phone:

Please Observe!

In order to obtain the **DEVI™ Warranty**, the following must be carefully filled in. See other conditions on the overleaf.

Electrical Installation by:

Installation date:

Type of thermostat:

Production code:

Suppliers Stamp:



DEVI A/S

Ulvehavevej 61

DK - 7100 Vejle

Phone +45 76 42 47 00

Fax +45 76 42 47 03